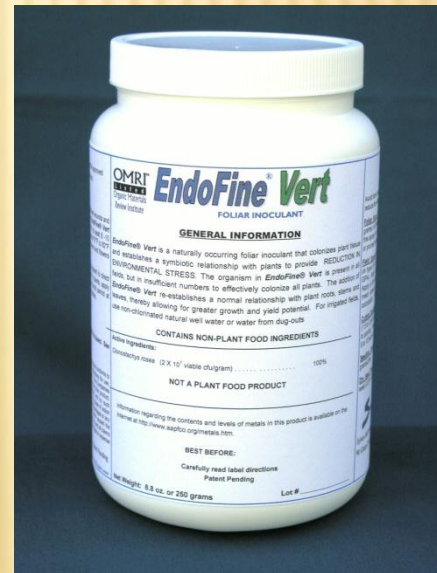


EndoFine® Vert

New, totally natural, inoculant for enhanced Vigor, Fitness, and Productivity of Crops, including greenhouse flowers and vegetables.

Adjuvants Plus

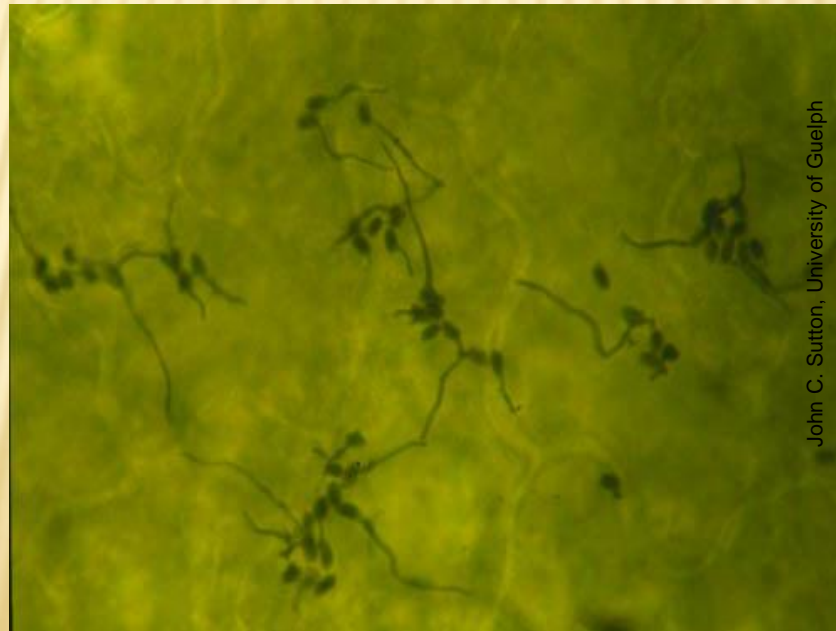


Manufactured for Adjuvants Plus by Sylvan BioProducts

Clonostachys rosea is a natural plant ENDOPHYTE

1. After EndoFine Vert is added to water, the sub-micron size spores germinate rapidly and attempt to enter plant tissues. Cuttings and pruning wounds are easily colonized.

Small and Quick!!

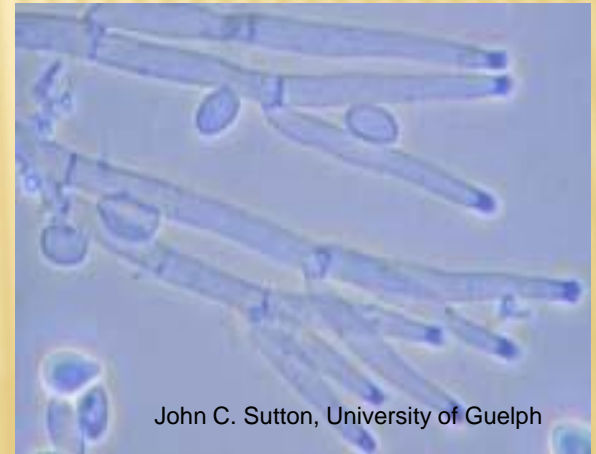
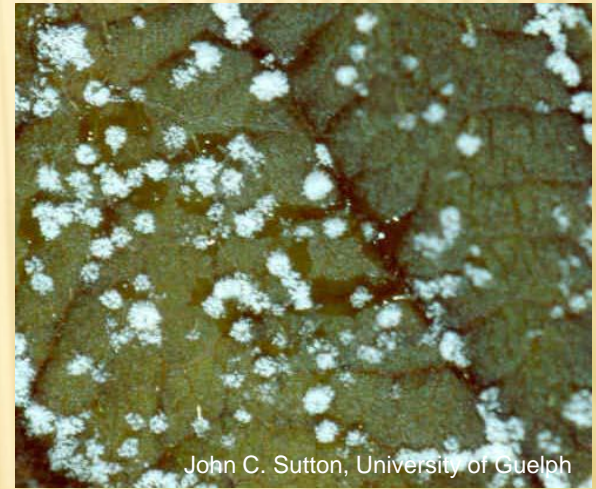


Clonostachys rosea is a natural plant ENDOPHYTE

2. EndoFine Vert fungus maintains a beneficial ENDOPHYTIC / SYMBIOTIC association with plant tissue for the life of the plant.
3. It grows locally WITHIN the colonized tissues near the sites of entry (Not systemic / No harmful effects!)
4. No Antibiotics and No Toxins are produced by this fungus.

HOW LONG DOES THE FUNGUS STAY ALIVE AND ACTIVE IN THE ROOTS AND/OR FOLIAGE?

- ✓ Normally until the tissues naturally senesce and die, or are severely stressed (such as by drought, high or low temperatures, insufficient light)
- ✓ The fungus **GROWS RAPIDLY** in naturally senescent or stressed tissues, and often sporulates (the new generation of spores allows continued/long-term benefits in some crops)

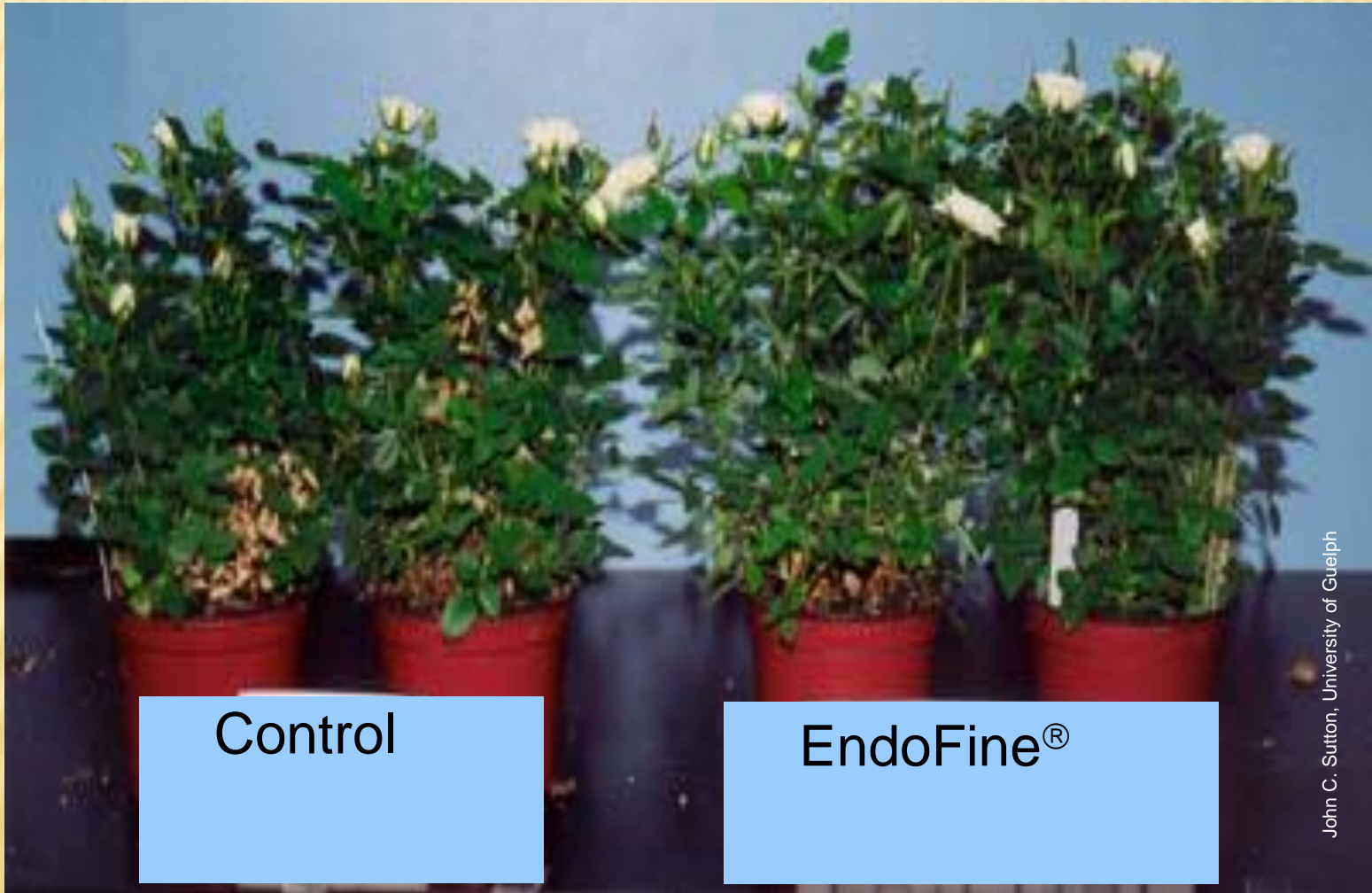


COMMON BENEFITS FROM ENDOFINE® COLONIZATION

Improved Plant Growth, Vigor, and Health

- Better-looking foliage
- Flowers well-formed / more abundant
- More tillers
- More abundant fine roots
- Improved nutrient uptake

ENDOFINE® ENHANCED MINIATURE ROSES



Control

EndoFine®

Spray Endofine Vert using a clean sprayer with non-chlorinated water, late in the day, immediately after wounding / trimming or pruning/de-leafing. High humidity for 8 hours increases colonization of foliage.



Adjuvants Plus, Inc.

EXAMPLES:

Reduced Plant Losses : From cutting through sales to home owner.



More Roots



More Flowers



**MORE ROOTS produce
BIGGER HEALTHIER PLANTS**

>>

COMMON BENEFITS OF ENDOFINE® INOCULATION

Healthier Plants are more stress tolerant

Common stress factors:

- Low fertility
- Insufficient / excess water
- High / Low temperature
- Low intensity light / light competition

HOW LONG IS ENDOFINE® INOCULANT ACTIVE AFTER APPLICATION? – FINDINGS TO DATE:

- Seedling Drenches:
long-term (weeks/months)
- Foliar Inoculation:
 - ✓ Inoculated tissues → many months.
 - ✓ NEW growth requires inoculation

ENDOFINE VERT SUMMARY

- ✘ U.S. Patent 8,101,551; OMRI Approved
- ✘ Over ten years of data on many horticultural crops
- ✘ Natural Formulation is excellent and multi-use

Observed Benefits of Endofine Enhanced Plants

1. Greater top growth.
2. More root growth.
3. Earlier and more flowers.
4. Shorter production cycle.
5. Reduced environmental stress.



Availability

Website under Biologicals:

www.adjuvantsplus.com